

Chemin du Pont-de-Centenaire 57

Chemin du Pont-du-Centenaire 57 - 1212 Onex - parcelle 1'083
Construction de quatre habitations contiguës en THPE (0.30) - places de parking

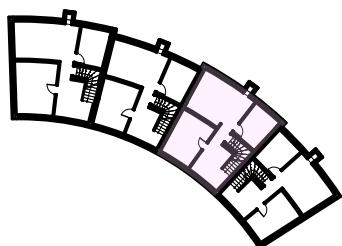
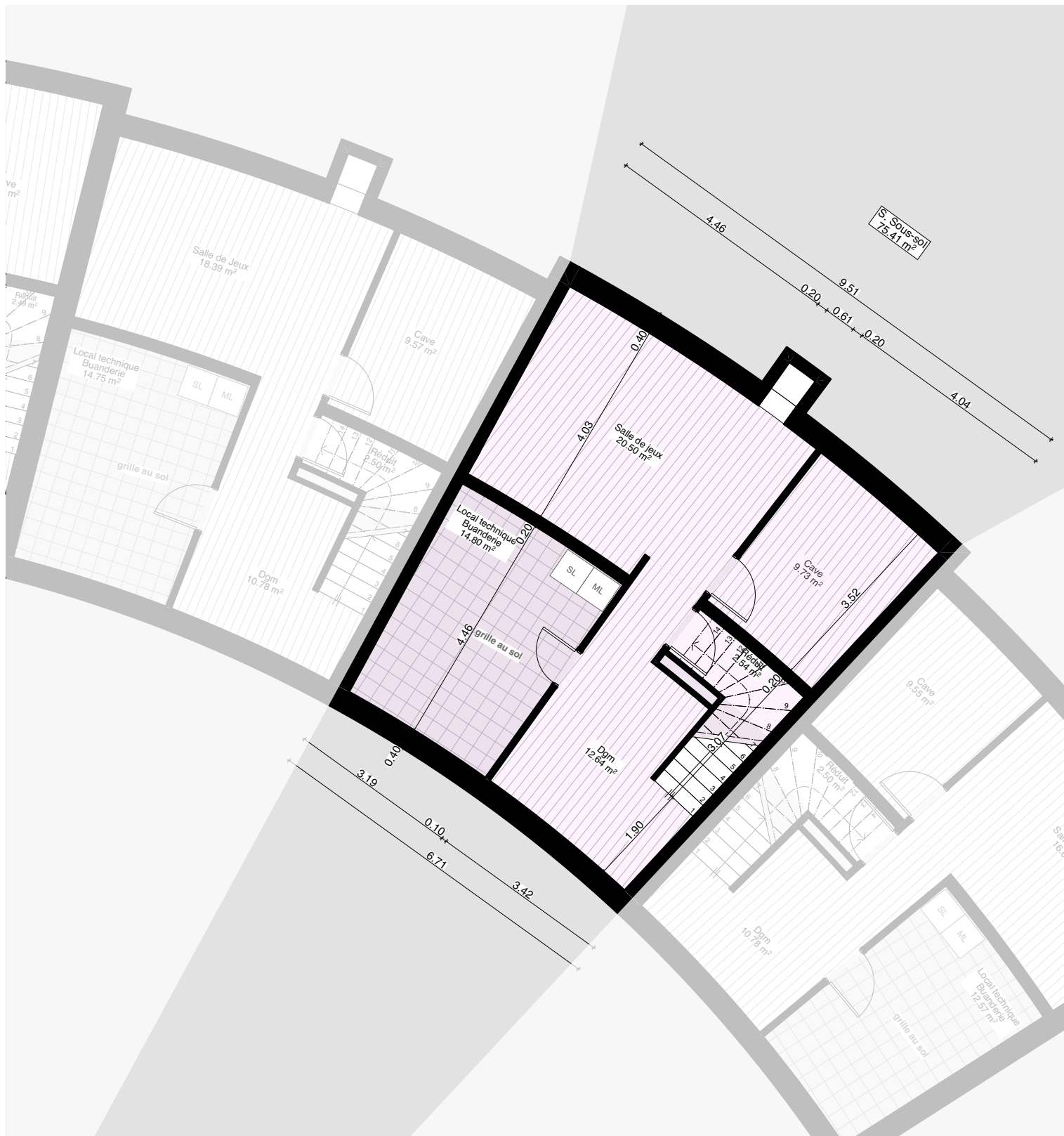


Plan de situation

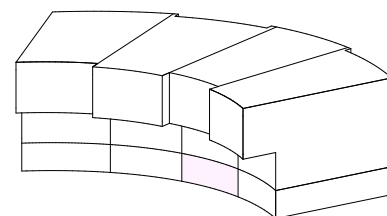
Villa A		
Surface parcelle:		1520.10 m ²
SBP:		176.20 m ²
Villa B		
Surface parcelle:		652.60 m ²
SBP:		157.65 m ²
Villa C		
Surface parcelle:		651.75 m ²
SBP:		162.75 m ²
Villa D		
Surface parcelle:		650.00 m ²
SBP:		151.49 m ²

Chemin du Pont-de-Centenaire 57

Chemin du Pont-du-Centenaire 57 - 1212 Onex - parcelle 1'083
Construction de quatre habitations contiguës en THPE (0.30) - places de parking

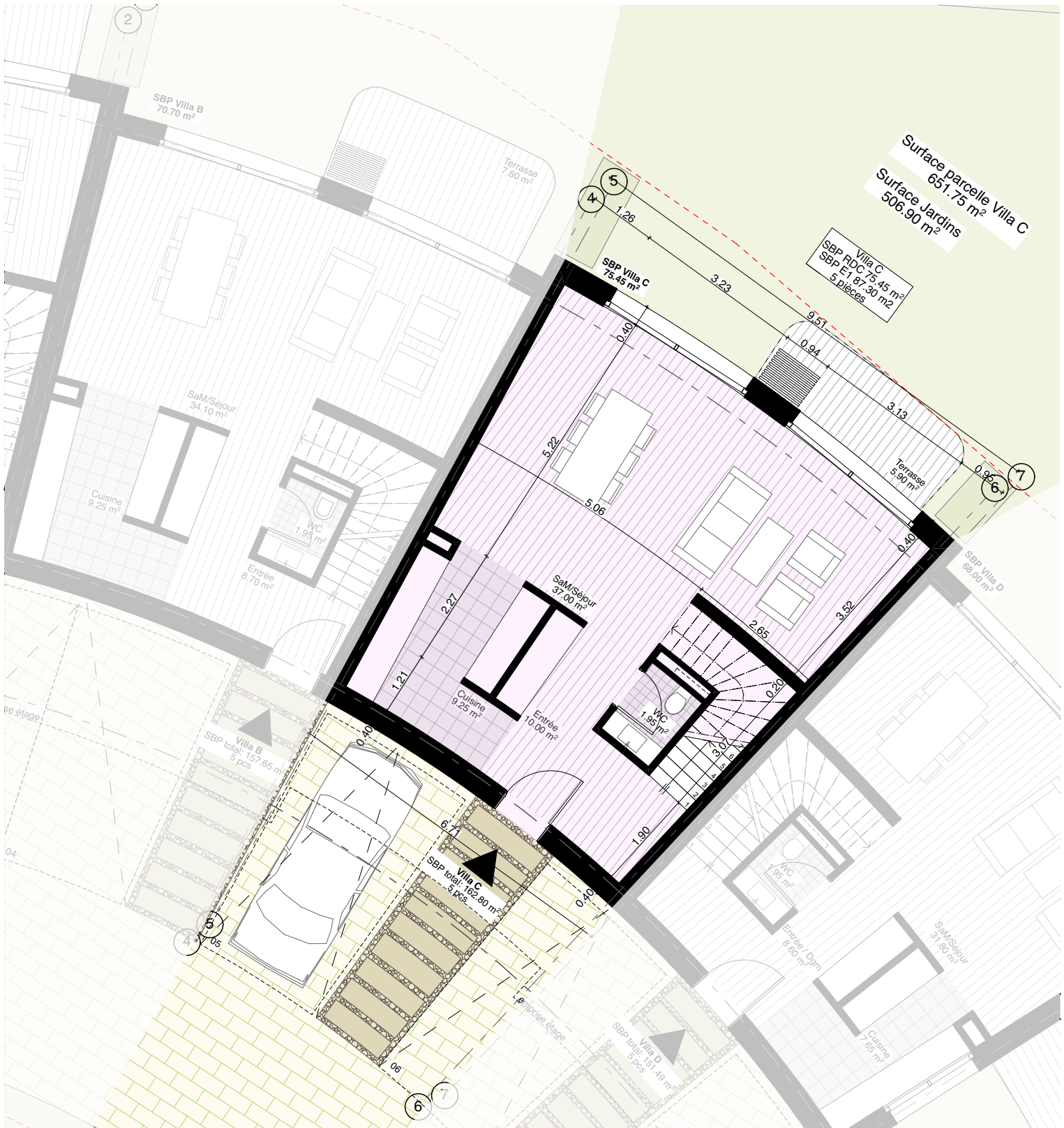


<u>Villa C - Sous-sol</u>	
Surface:	75.41 m ²



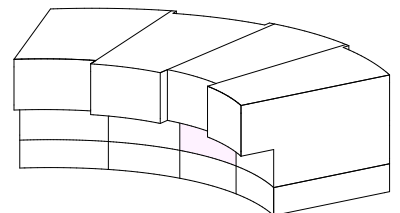
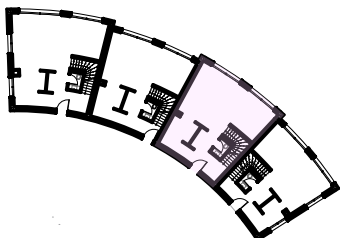
Chemin du Pont-de-Centenaire 57

Chemin du Pont-du-Centenaire 57 - 1212 Onex - parcelle 1'083
Construction de quatre habitations contiguës en THPE (0.30) - places de parking



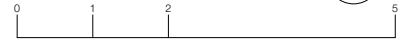
Villa B - Rez-de-chaussée

Surface (SBP):	75.45 m ²
Jardins:	506.90 m ²
Terrasse:	5.90 m ²
N° de Pièces:	2 pcs



Chemin du Pont-de-Centenaire 57

Chemin du Pont-du-Centenaire 57 - 1212 Onex - parcelle 1'083
Construction de quatre habitations contiguës en THPE (0.30) - places de parking



Villa C - Premier Étage

Surface (SBP): 87.30 m²
N° de Pièces: 3 pcs

